

KUAFU,
DEDICATED
CHACING THE SUN,
WASN'T ABLE TO
REACH IT
THROUGHOUT HIS LIFE.
THIRST TO DEATH
ON HALF
OF THE WAY.

«THE CLASSIC OF MOUNTAINS AND SEAS»

Is
THERE
A POSSIBILITY
THAT WE ARE ALWAYS
AFTER SOMETHING,
WE THOUGHT WE COULD,
BUT WE ARE
ACTUALLY
NEVER EVER ABLE TO
REACH?

LIGHT - "BRIGHTNESS, RADIANT ENERGY, THAT WHICH MAKES THINGS VISIBLE."

LIGHT HAS AND SEAS». BETWEEN IN A QUITE
ALWAYS THE BOOK IS KUAFU AND THE PHILOSOPHY
MEANT FOR A COLLECTION SUN, WHEN WE WAY IN THE
HUMAN. OF ANIMALS, THOUGHT OF OLD TIMES.
AIR, WATER, PLANTS, LIGHT. KUAFU IT WAS
SUNLIGHT. MEDICAL, DEDICATED HIS RELATED TO
IT IS ONE MYTHS, LIFE CHASING OUR RELIGION,
OF THE GEOGRAPHY THE SUN, TO OUR FEAR,
THREE VITAL AND HISTORY HOWEVER, HE OUR DESIRE.....
SUBSTANCES THAT HAD BEEN STILL THIRST
THAT ACCUMULATED TO DEATH ON IT LEAVES
SUPPORTS US THROUGHOUT HALF OF THE HUMAN KIND AN
PHYSICALLY. THE EARLY WAY, EVEN UNDERSTANDING

T H E D A R K R O O M

WHAT IS LIGHT YEARS OF THOUGH HE TO THE WORLD
TO YOU? THE WARRING DRANK ALL OF THAT CAN NOT
WE HAD THIS STATES THE WATER IN BE REPLACED
IMPRESSION PERIOD(475 BC THE RIVERS. WITH SCENT,
OF LIGHT, - 221 BC) TO WITH TASTE OR
IMPLYING THE EARLY HAN WE HAD THIS WITH TOUCH.....
THE DESIRE DYNASTY(206 OBSERVATION
OF HUMAN, BC - AD 8). THROUGH, AND THROUGHOUT
FROM ONE OF FOUND IT THE TIME,
THE ANCIENT THE TWO OF FASCINATING LIGHT ALWAYS
MYTHES IN US REMINDED THAT LIGHT MEANS MORE
«THE CLASSIC OURSELVES THE APPEARED THAN WHAT IT
OF MOUNTAINS RELATIONSHIP TO PEOPLE ACTUALLY IS.

AKADEMIE DER BILDENDEN KÜNSTE MÜNCHEN | TZU-JEN CHOU | QIYUE ZHANG

T H E D A R K R O O M

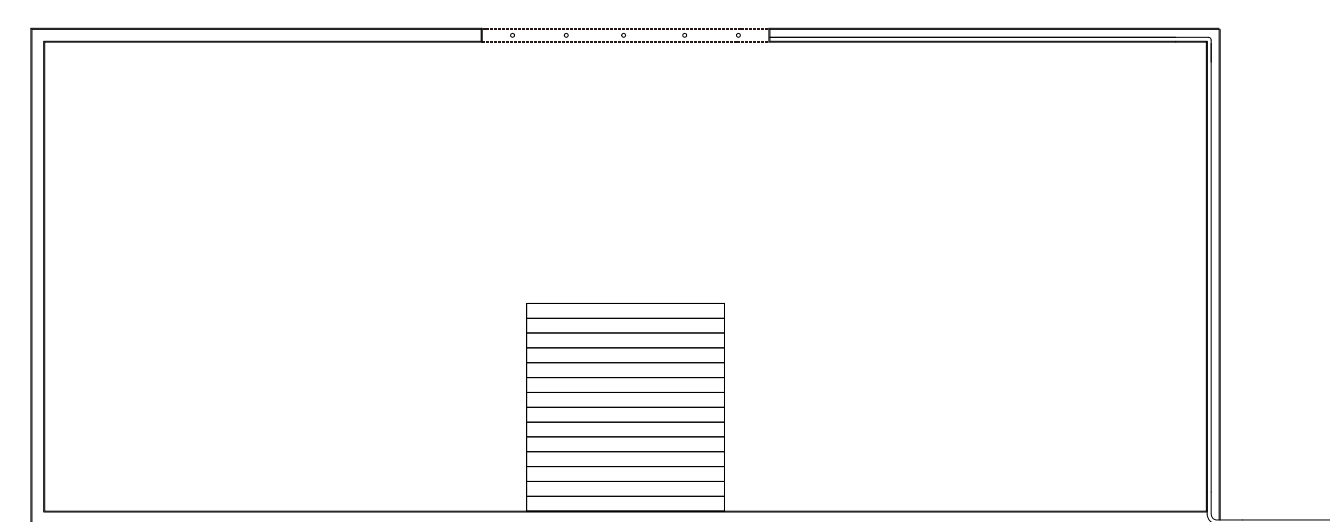
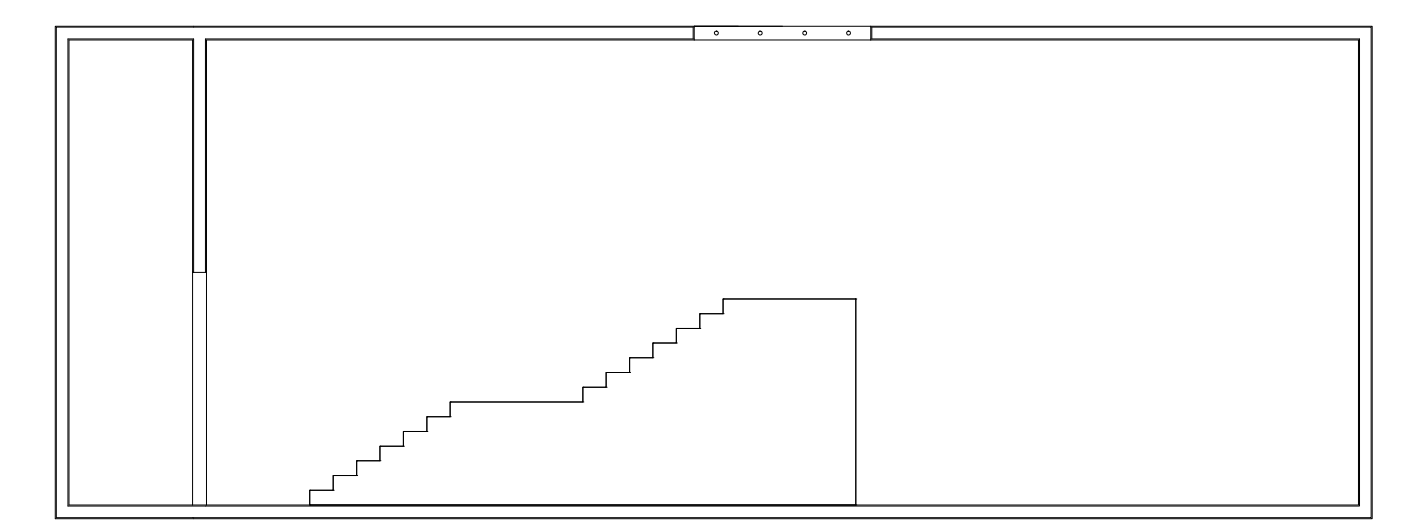
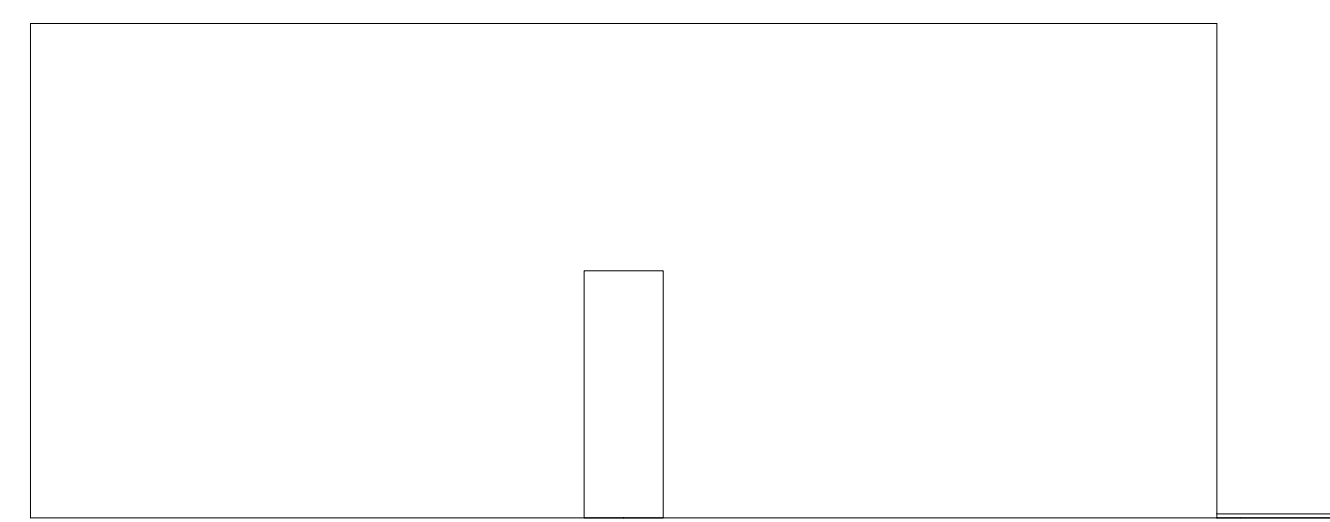


MADE BY
TZU-JEN
CHOU
/
QIYUE
ZHANG

WE DECIDED TO MAKE A 12x12x10 METER DARK ROOM WITH TWO LAYERS OF METAL SHEET. WE KEEP THE REFLECTING CHARACTER OF METAL ITSELF FOR THE OUTSIDE OF THE DARK ROOM, AND MAKE IT UNREFLECTABLE BLACK INSIDE. SO THAT THE OUTSIDE OF IT REFLECTS THE NATURE WITH THE BRIGHTNESS FROM THE DAYLIGHT, WHICH PRESENTS A CLEAR PICTURE OF SURROUNDINGS AND THE INTERECTION OF WHAT HAPPENS OUTSIDE. IN

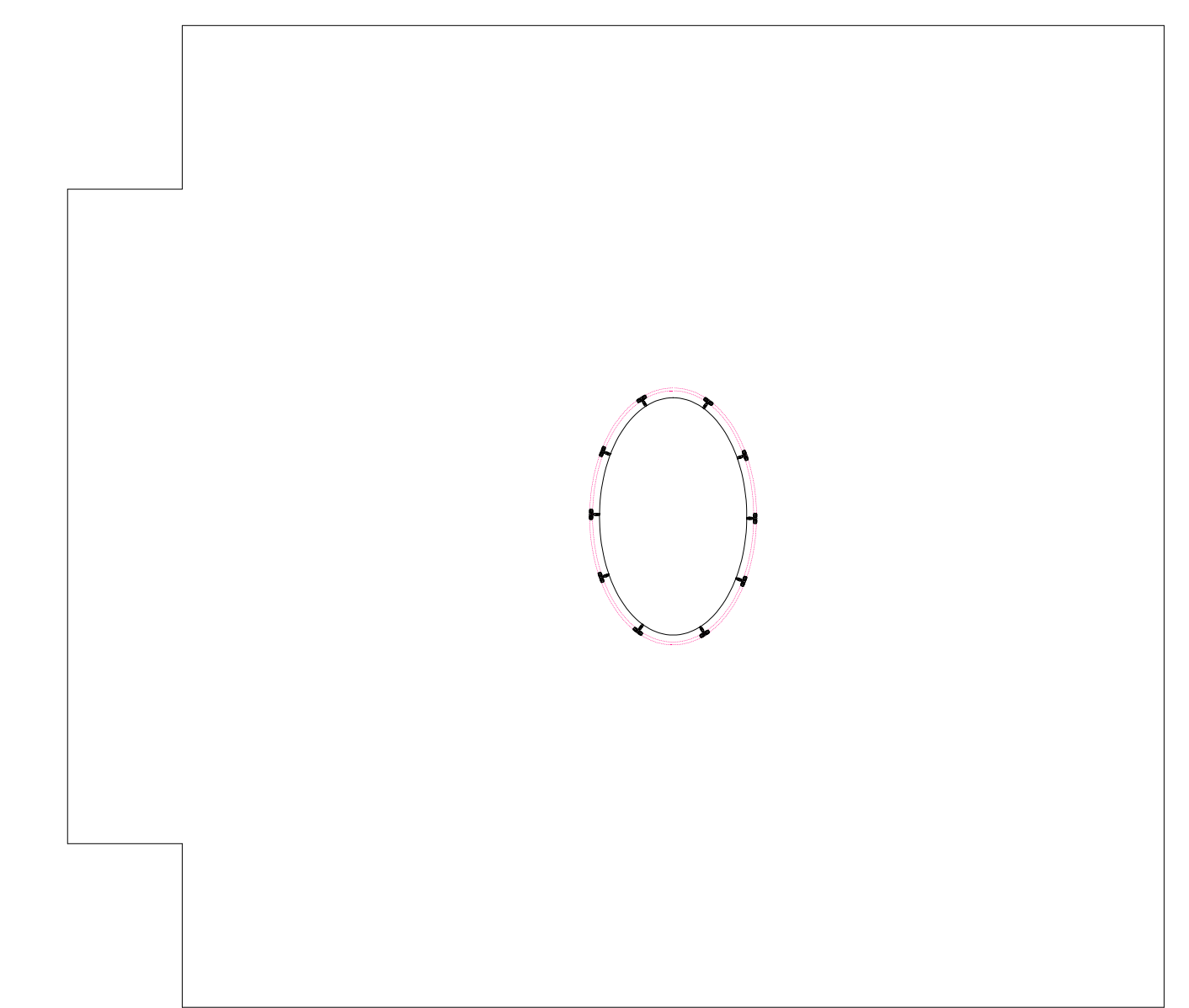
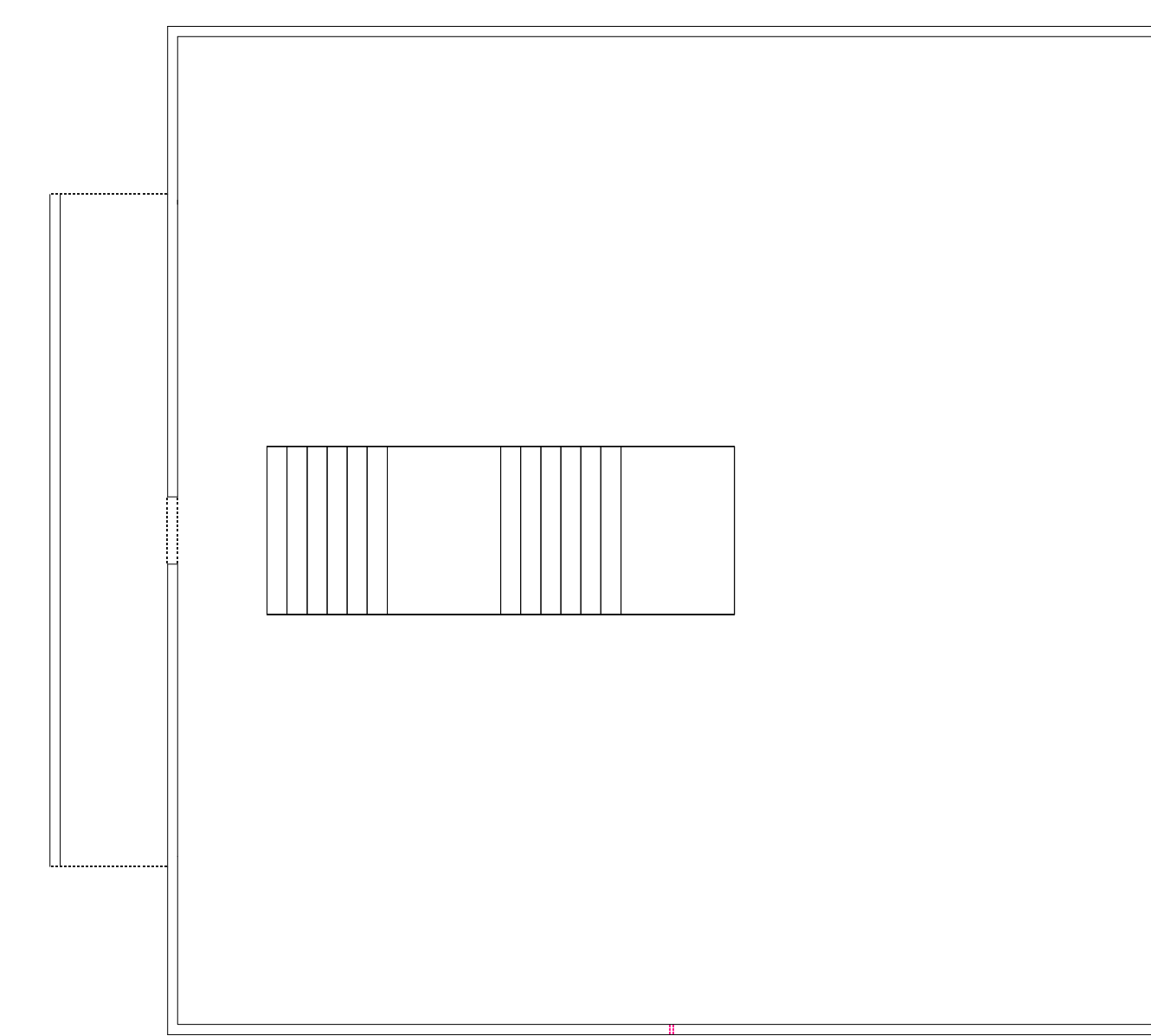
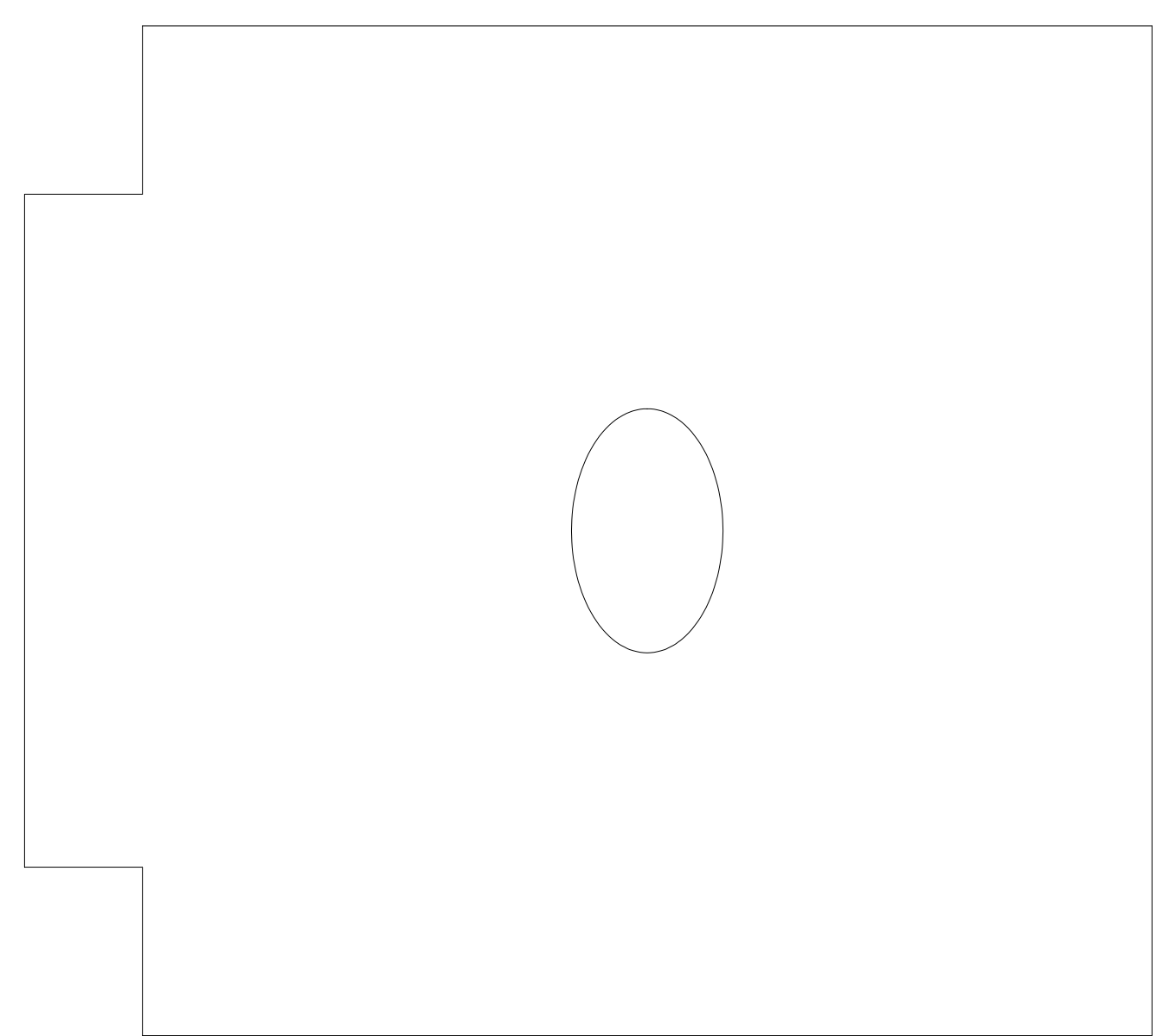
THE MEAN TIME, A STRONG CONTRAST IS CARRIED OUT WITH A SIMPLE QUIET BLACK SPACE INSIDE AND A CONSTANT STAIRCASE IN THE MIDDLE LEADS THE FOCUS TO A RELATIVELY UNKNOWN BLURRY LIGHT FROM THE HOLE WITH WATER MIST.

WITH THE THIN ENTRANCE, A SCENE OF THE CHANGING RELATIONSHIP BEWEEN THE LIGHT AND THE PEOPLE INSIDE CAN ALSO BE SEEN.



FASSADE
/
VIEW
OF
ENTRENCE
/
FRONT
SECTION

RIGHT
VIEW
/
RIGHT
SECTION



← z

VIEW FROM ABOVE / PLAN / SYSTEM DETAIL

0 500 1000